



GEMOLOGIST REPORT

DATE : 02/28/2014 SUMMARY # : 2262158003
SHAPE/CUT: ROUND BRILLIANT
MEASUREMENT: 6.21 - 6.20 X 3.20 MM
WEIGHT: 1.25 CTTW
COLOR: G-H
CLARITY: I1-I2
POLISH/SYMMETRY: GOOD/GOOD

Description : GRADED AS MOUNTING PERMITS. ONE THREE STONE DIAMOND RING. ROUND BRILLIANT CUT DIAMONDS IN A 14K WHITE GOLD MOUNTING. TOTAL WEIGHTS AND GRADES ARE APPROXIMATE. THIS REPORT IS FOR GRADING INFORMATION.

Certified  Diamonds

INDEPENDENT GEMOLOGICAL LABORATORIES

500 7TH AVE SUITE 12B NY, NY 10018 • WWW.DIA-LAB.COM • TEL:212.382.0008



GEMOLOGIST REPORT

DATE :02/25/2014	REPORT# 2262095022
SHAPE/CUT:	PRINCESS CUT
WEIGHT:	1.25 CTTW
COLOR:	G-H
CLARITY:	I1-I2
POLISH/SYMMETRY:	V.GOOD/V.GOOD

Description: GRADED AS MOUNTING PERMITS. ONE THREE STONE DIAMOND RING. PRINCESS CUT DIAMONDS IN A 14K WHITE GOLD MOUNTING. TOTAL WEIGHTS AND GRADES ARE APPROXIMATE. THIS REPORT IS FOR GRADING INFORMATION.

Certified  ***Diamonds***

INDEPENDENT GEMOLOGICAL LABORATORIES

500 7TH AVE SUITE 12B NY, NY 10018 • WWW.DIA-LAB.COM • TEL:212.382.0008



INDEPENDENT
GEMOLOGICAL LABORATORIES

MACRO REPORT

DATE : 10/14/2014 REPORT # : 2267153001

SHAPE / CUT : ROUND BRILLIANT

WEIGHT: 1.25 CTTW

COLOR: G-H

CLARITY: I1-I2

Description: GRADED AS MOUNTING PERMITS.
ONE THREE STONE DIAMOND RING. ROUND
BRILLIANT CUT DIAMONDS IN A 14K YELLOW
GOLD MOUNTING. THIS REPORT IS FOR GRADING
RESULTS.



500 7TH AVE FL 12B, NY NY 10018 212.382.0008 WWW.DIA-LAB.COM



INDEPENDENT
GEMOLOGICAL LABORATORIES

MACRO REPORT

DATE : 10/14/2014 REPORT # : 2267152001

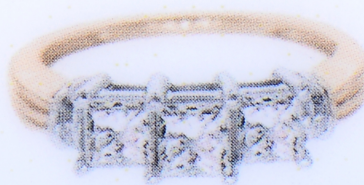
SHAPE / CUT : PRINCESS CUT

WEIGHT: 1.25 CTTW

COLOR: G-H

CLARITY: I1-I2

Description: GRADED AS MOUNTING PERMITS.
ONE THREE STONE DIAMOND RING. PRINCESS
CUT DIAMONDS IN A 14K YELLOW GOLD
MOUNTING. VALUE IS FOR INSURANCE
PURPOSES.



500 7TH AVE FL 12B, NY NY 10018 212.382.0008 WWW.DIA-LAB.COM