

# Ceramic Essentials...

Thank you for requesting Dragon Gardens Northwest's latest catalog. Our catalog has been completely redesigned, with a conscious effort to create a sales tool for our clients, not just another pottery catalog.

Our primary focus is to create a purchasing experience for our buyers that is **simple, convenient and profitable**.

We strive to do that with **innovative sales programs** such as the Pallet Plus+ and FCL Direct programs, and by independently sourcing high quality products from Asia.

Our sales programs allow independent garden centers and retailers to compete with "box stores" on value, and our diverse, high-quality product lines allows our design clients and trade professionals to deliver the look their clients demand.

We have been developing collaborative relationships with our customers since 1999. The owner, Eric Paulson grew Dragon Gardens from his love of bonsai and his fascination with the culture for China. Now after 10 years of travel to China, he has developed strong supply chains that allows this company to sell ceramics by the piece, set, pallet and container load.

For more information visit our web site at: [www.dragongardens.com](http://www.dragongardens.com)

Regards,



Eric Paulson, President





## Table of Contents

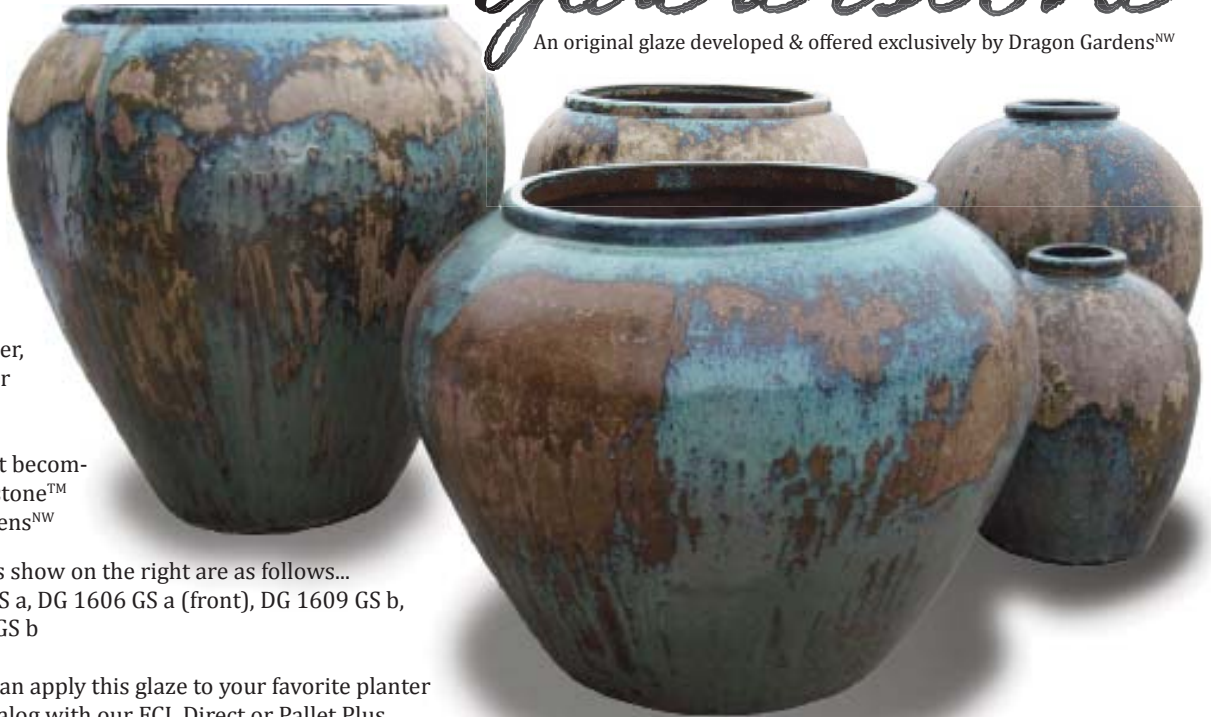
New Products	Page	3 - 4
Sales Programs	Page	5 - 6
Boldstone	Page	7 - 42
Marblestone	Page	43 - 53
Heirloom Bonsai Pottery	Page	54 - 55
Floralware	Page	56 - 57
Ethics Statement	Page	58 - 59
Glaze Swatches	Pages	60 - 65



# Glacierstone

An original glaze developed & offered exclusively by Dragon Gardens<sup>NW</sup>

- Available on any of our Boldstone planters, urns, fountains or pots, call now to choose yours
- A exotic, organic finish exuding age and character, with a blue-green copper patina
- Call now to learn about becoming an exclusive Glacierstone<sup>TM</sup> vendor for Dragon Gardens<sup>NW</sup>
- The codes for the items show on the right are as follows...  
(left to right) DG 1609 GS a, DG 1606 GS a (front), DG 1609 GS b, DG 1187 GS a, DG 1187 GS b
- Please remember, we can apply this glaze to your favorite planter or fountain from our catalog with our FCL Direct or Pallet Plus Program.





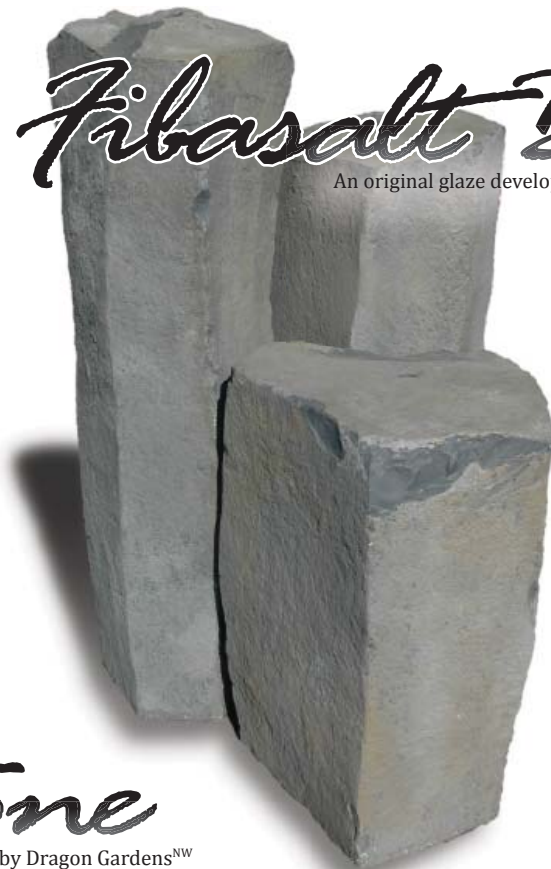


## Coralstone

An original glaze developed & offered exclusively by Dragon Gardens<sup>NW</sup>

## Fibersalt Bubbler

An original glaze developed & offered exclusively by Dragon Gardens<sup>NW</sup>



- The most realistic “faux” cored- basalt rocks on the market
- Perfect kit for the DIY (do-it-yourself-er)
- Kit includes pump, tubing & basin
- Light-weight; 40” bubbler = 60 lbs.
- USA Lab tested for stain durability
- Color stain applied in the USA
- Constructed from material similar to Hardieplank exterior siding
  - Imported exclusively from China by Dragon Gardens<sup>NW</sup>
- Hand finished in Portland, OR
- Add some bubblers to your Pallet+™ program order



simple, convenient & profitable...

# FCL Direct Program

Full container loads (FCL) direct from Asia...This program offers our lowest prices and greatest selection of products. By participating in this program, you are essentially buying direct from Asia without the risk. We have chosen to offer our best factories to you with the FCL Direct program. Here is how the program works;

## **MAXIMUM CHOICE**

*Choose from over a 1,000 products from trusted factories across Asia*

## **FANTASTIC PRICES**

*Up to 75-85 percent margins*

## **RE-SUPPLY DISCOUNT**

*We apply a sub-wholesale discount to any warehouse purchases*

We also have the ability to combine different factories products into a single container (20', 40', 40HQ) due to our consolidation warehouse in China. Once your order is ready to ship, we utilize our 10 years of importing experience to economically and efficiently land the container at your door.

## **MARKETING MATERIAL**

*High quality, inexpensive, custom printed, advertising material*

## **FOUNTAIN PUMPS & LOW VOLTAGE LIGHTING**

*All UL approved*

## **DECORATIVE & CONSTRUCTION STONE**

*Including statue, fountain, tile, slab and bamboo flooring*

## **FIBERCLAY, FIBERGLASS & TERRACOTTA**

*Planters and fountains*





# Pallet Plus Program

We created the Pallet Plus+ program by listening to small to mid-sized independent garden centers, nurseries and home & garden retailers who wanted to compete on value but did not have the facilities or personnel to support FCL purchasing. Here is how this cost-effective, efficient program works;

## **LOTS OF CHOICES**

*Choose from our pallets or build your own from this catalog*

## **PRICES TO BEAT THE BOX STORE**

*Up to 60 percent margins*

## **STAGGERED DELIVERIES**

*Orders delivered on a monthly schedule your sales demands*

## **FREE SHIPPING**

*In Washington, Oregon or Idaho. (discounted everywhere else)*

## **IN-HOUSE DISCOUNT**

*Sub-wholesale discount applied to all additional purchases*

This program is a way for you to manage, handle and sell your pottery more effectively, keeping your expenses down and your profits up, and you in control. Some additional benefits are;

## **NO FRONT-LOADING**

*Don't sacrifice your vision of your store for lower pottery prices*

## **RESPONSIBLE INVOICE DATING**

*All invoices NET 30, pay as you go, no balloon payments in summer*



# Boldstone Collection

Our Boldstone line is created from high iron, ball clay which is hand-pressed into a plaster molds. After drying somewhat in the mold, the vessel is removed from the molds, hand-finished on a wheel. Next it is fired with a white slip glaze. This slip glaze provides the pallet for the final color glaze, which is applied after the vessel cools from the slip firing. The vessel journeys through the kiln for almost 14 hours reaching cone 5-6 in the gas fired kilns. Some of the characteristics that this production method creates are;

## **FROST-PROOF**

*Boldstone is considered low/mid level stoneware, semi-vitrified*

## **VIVID COLORS**

*Our Ox-Blood Red is one of the finest on the market*

## **TRADITIONAL TO EXOTIC SHAPES**

*From large urns & ginger jars to modern tapered squares*

## **ANY SIZE**

*Ranging from massive 70+ inch bowls to tiny table-toppers*

The majority of the Boldstone line in our warehouse is imported from China. We have found the glazes from our Chinese manufacturers to be the best we can offer our customers. Boldstone is our best selling product line, accounting for the majority of our sales.





# DG 1020

	Width	Width	Width	Height	Height
Sizes	<i>Opening</i>	<i>Widest</i>	<i>@ Base</i>	<i>Outside</i>	<i>Inside</i>
A	21 in	25 in	17 in	26 in	21.5 in
B	15 in	18 in	13 in	20 in	16.5 in
C	10.5 in	13 in	8 in	15 in	12.5 in

	Weight	Volume	% set	Suggested Retail
A	80 lbs	9.4 ft <sup>3</sup>	64 %	\$ 327.00
B	46 lbs	3.8 ft <sup>3</sup>	26 %	\$ 131.00
C	23 lbs	1.5 ft <sup>3</sup>	10 %	\$ 51.00

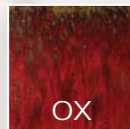
**Set of 3**

**\$ 509.00**

**Comments:** Boldstone planter, frost-proof, drain hole, imported from China

**Item Shown:** DG 1020 BK A

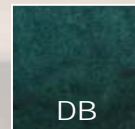
**Other Commonly Stocked Colors...**



OX



IB



DB



# DG 1101

Set	Width <i>Opening</i>	Width <i>Widest</i>	Width <i>@ Base</i>	Height <i>Outside</i>	Height <i>Inside</i>
A	14 in	21 in	17 in	18 in	20 in
B	10 in	15 in	12 in	14 in	14 in

	Weight	Volume	% set	Suggested Retail
A	55 lbs	4.6 ft <sup>3</sup>	- %	\$ 162.00
B	29 lbs	1.8 ft <sup>3</sup>	- %	\$ 88.00

**Comments:** Boldstone planter, two sizes (not a set), frost-proof, drain hole, imported from China

**Item Shown:** DG 1101 CP A

**Other Commonly Stocked Colors...**



BB



LG



OX





# DG 1102

	Width	Width	Width	Height	Height
Sizes	<i>Opening</i>	<i>Widest</i>	<i>@ Base</i>	<i>Outside</i>	<i>Inside</i>
A	15 in	18 in	11 in	23 in	22 in
B	12 in	14 in	9 in	18 in	17 in
C	9.5 in	11 in	7 in	14 in	13 in

	Weight	Volume	% set	Suggested Retail
A	80 lbs	3.6 ft <sup>3</sup>	63 %	\$ 139.00
B	46 lbs	1.7 ft <sup>3</sup>	29 %	\$ 99.00
C	23 lbs	0.5 ft <sup>3</sup>	8 %	\$ 27.00

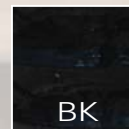
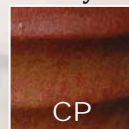
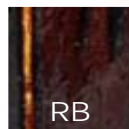
**Set of 3**

**\$ 265.00**

**Comments:** Boldstone planter, frost-proof, drain hole, imported from China

**Item Shown:** DG 1102 BB A

**Other Commonly Stocked Colors...**



# DG 1104

<b>Sizes</b>	<b>Width Opening</b>	<b>Width Widest</b>	<b>Width @ Base</b>	<b>Height Outside</b>	<b>Height Inside</b>
A	19 in	24 in	12 in	16 in	15 in
B	15 in	18 in	9 in	13 in	12 in
C	11 in	14 in	7.5 in	11 in	9.5 in
D	8.5 in	10 in	5.5 in	8.5 in	7.5 in

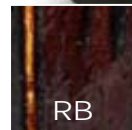
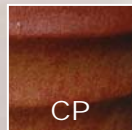
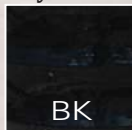
	<b>Weight</b>	<b>Volume</b>	<b>% set</b>	<b>Suggested Retail</b>
A	56 lbs	4.9 ft <sup>3</sup>	61 %	\$ 214.00
B	29 lbs	2.0 ft <sup>3</sup>	25 %	\$ 88.00
C	14 lbs	0.8 ft <sup>3</sup>	9 %	\$ 34.00
D	8 lbs	0.4 ft <sup>3</sup>	5 %	\$ 18.00

**Set of 4** **\$ 354.00**

**Comments:** Boldstone planter, set of four, frost-proof, drain hole, imported from China

**Item Shown:** DG 1104 EG A

**Other Commonly Stocked Colors...**





# DG 1106

	Width	Width	Width	Height	Height
Sizes	Opening	Widest	@ Base	Outside	Inside
A	21 in	26 in	12 in	24 in	23 in
B	16 in	19 in	9 in	20 in	19 in
C	13 in	16 in	8 in	16 in	15 in
D	9 in	11 in	6 in	11 in	11 in

	Weight	Volume	% set	Suggested Retail
A	80 lbs	8.7 ft <sup>3</sup>	55 %	\$ 307.00
B	46 lbs	4.2 ft <sup>3</sup>	27 %	\$ 149.00
C	27 lbs	2.1 ft <sup>3</sup>	13 %	\$ 74.00
D	13 lbs	0.8 ft <sup>3</sup>	5 %	\$ 27.00

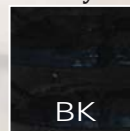
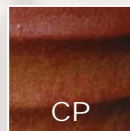
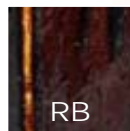
**Set of 4**

**\$ 557.00**

**Comments:** Boldstone planter, frost-proof, drain hole, imported from China

**Item Shown:** DG 1106 OX A

**Other Commonly Stocked Colors...**





# DG 1107

<b>Sizes</b>	<b>Width Opening</b>	<b>Width Widest</b>	<b>Width @ Base</b>	<b>Height Outside</b>	<b>Height Inside</b>
A	16 in	18 in	11 in	22 in	21 in
B	13 in	14 in	9 in	19 in	18 in
C	9 in	11 in	7 in	15 in	14 in
D	7 in	9 in	5.5 in	14 in	13 in

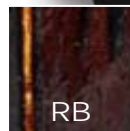
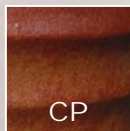
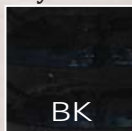
	<b>Weight</b>	<b>Volume</b>	<b>% set</b>	<b>Suggested Retail</b>
A	73 lbs	4.9 ft <sup>3</sup>	52 %	\$ 179.00
B	43 lbs	2.0 ft <sup>3</sup>	28 %	\$ 98.00
C	14 lbs	0.8 ft <sup>3</sup>	13 %	\$ 46.00
D	13 lbs	0.4 ft <sup>3</sup>	6 %	\$ 23.00

**Set of 4** **\$ 346.00**

**Comments:** Boldstone planter, frost-proof, drain hole, imported from China

**Item Shown:** DG 1107 IB A

**Other Commonly Stocked Colors...**





# DG 1108

	Width	Width	Width	Height	Height
Sizes	<i>Opening</i>	<i>Widest</i>	<i>@ Base</i>	<i>Outside</i>	<i>Inside</i>
A	24 in	28 in	14 in	41 in	40 in
B	16 in	19 in	11 in	29 in	28 in

	Weight	Volume	% set	Suggested Retail
A	195 lbs	17.3 ft <sup>3</sup>	72 %	\$ 750.00
B	88 lbs	6.7 ft <sup>3</sup>	28 %	\$ 235.00

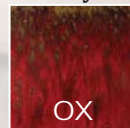
**Set of 2**

**\$ 985.00**

**Comments:** Boldstone planter, frost-proof, drain hole, imported from China

**Item Shown:** DG 1108 BK B

**Other Commonly Stocked Colors...**



OX



BB

# DG 1109

Size	Width Opening	Width Widest	Width @ Base	Height Outside	Height Inside
A	- in	15 in	14in	19 in	- in

	Weight	Volume	% set	Suggested Retail
A	56 lbs	4.5 ft <sup>3</sup>	- %	\$ 163.00

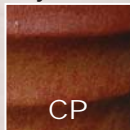
**Comments:** Boldstone garden stool, single piece, frost-proof, drain hole, imported from China

**Item Shown:** DG 1109 BB A

**Other Commonly Stocked Colors...**



OX



CP





# DG 1110

	Width	Width	Width	Height	Height
Sizes	<i>Opening</i>	<i>Widest</i>	<i>@ Base</i>	<i>Outside</i>	<i>Inside</i>
A	14 in	17 in	12 in	33 in	34 in
B	12 in	13 in	9 in	28 in	27 in
C	8 in	9.5 in	6.5 in	22 in	19 in

	Weight	Volume	% set	Suggested Retail
A	113 lbs	5.5 ft <sup>3</sup>	57 %	\$ 207.00
B	60 lbs	2.7 ft <sup>3</sup>	28 %	\$ 102.00
C	34 lbs	1.0 ft <sup>3</sup>	15 %	\$ 52.00

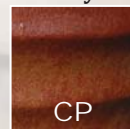
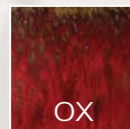
**Set of 3**

**\$ 361.00**

**Comments:** Boldstone planter, frost-proof, drain hole, imported from China

**Item Shown:** DG 1110 EG A

**Other Commonly Stocked Colors...**





# DG 1111

<b>Sizes</b>	<b>Width <i>Opening</i></b>	<b>Width <i>Widest</i></b>	<b>Width <i>@ Base</i></b>	<b>Height <i>Outside</i></b>	<b>Height <i>Inside</i></b>
A	14 in	17 in	12 in	33 in	34 in
B	12 in	13 in	9 in	28 in	27 in
C	8 in	9.5 in	6.5 in	22 in	19 in

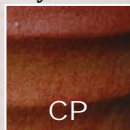
	<b>Weight</b>	<b>Volume</b>	<b>% set</b>	<b>Suggested Retail</b>
A	113 lbs	5.5 ft <sup>3</sup>	57 %	\$ 207.00
B	60 lbs	2.7 ft <sup>3</sup>	28 %	\$ 102.00
C	34 lbs	1.0 ft <sup>3</sup>	15 %	\$ 52.00

**Set of 3** **\$ 361.00**

**Comments:** Boldstone planter, frost-proof, drain hole, imported from China

**Item Shown:** DG 1111 LR A

**Other Commonly Stocked Colors...**





# DG 1112

<b>Sizes</b>	<b>Width Opening</b>	<b>Width Widest</b>	<b>Width @ Base</b>	<b>Height Outside</b>	<b>Height Inside</b>
A	19 in	21 in	15 in	28 in	26 in
B	16 in	18 in	13 in	23 in	22 in
C	13 in	14 in	10 in	18 in	17 in
D	10 in	11 in	7.5 in	13 in	12 in

	<b>Weight</b>	<b>Volume</b>	<b>% set</b>	<b>Suggested Retail</b>
A	105 lbs	7.8 ft <sup>3</sup>	52 %	\$ 258.00
B	65 lbs	4.3 ft <sup>3</sup>	28 %	\$ 142.00
C	32 lbs	2.0 ft <sup>3</sup>	13 %	\$ 68.00
D	15 lbs	1.0 ft <sup>3</sup>	6 %	\$ 33.00

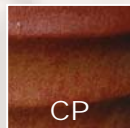
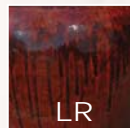
**Set of 4**

**\$ 501.00**

**Comments:** Boldstone planter, frost-proof, drain hole, imported from China

**Item Shown:** DG 1112 CG A

**Other Commonly Stocked Colors...**



# DG 1115

Size	Width <i>Opening</i>	Width <i>Widest</i>	Width <i>@ Base</i>	Height <i>Outside</i>	Height <i>Inside</i>
A	17 in	20 in	14 in	17 in	16 in
B	14 in	16 in	12 in	13 in	12 in
C	10 in	12 in	8 in	12 in	11 in
D	6.5 in	9.5 in	7 in	9 in	8 in

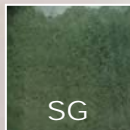
	Weight	Volume	% set	Suggested Retail
A	49 lbs	2.2 ft <sup>3</sup>	57%	\$ 167.00
B	30 lbs	1.1 ft <sup>3</sup>	27%	\$ 81.00
C	16 lbs	0.4 ft <sup>3</sup>	11%	\$ 32.00
D	10 lbs	0.2 ft <sup>3</sup>	5%	\$ 15.00

**Set of 4** **\$ 295.00**

**Comments:** Boldstone planter, frost-proof, drain hole, imported from China

**Item Shown:** DG 1115 CP A

**Other Commonly Stocked Colors...**





# DG 1116

<b>Sizes</b>	<b>Width Opening</b>	<b>Width Widest</b>	<b>Width @ Base</b>	<b>Height Outside</b>	<b>Height Inside</b>
A	17 in	20 in	14 in	9.5 in	8.5 in
B	14 in	16 in	12 in	8 in	7 in
C	10 in	12 in	8.5 in	6.5 in	5.5 in
D	6.5 in	7.5 in	5.5 in	4.5 in	3.5 in

	<b>Weight</b>	<b>Volume</b>	<b>% set</b>	<b>Suggested Retail</b>
A	29 lbs	2.1 ft <sup>3</sup>	53%	\$ 86.00
B	19 lbs	1.2 ft <sup>3</sup>	30 %	\$ 48.00
C	11 lbs	0.5 ft <sup>3</sup>	13 %	\$ 20.00
D	4 lbs	0.2 ft <sup>3</sup>	4 %	\$ 6.00

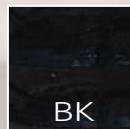
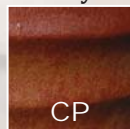
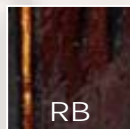
**Set of 4**

**\$ 160.00**

**Comments:** Boldstone planter, set of four, frost-proof, drain hole, imported from China

**Item Shown:** DG 1115 BB A

**Other Commonly Stocked Colors...**





# DG 1125

<b>Sizes</b>	<b>Width</b> <i>Opening</i>	<b>Width</b> <i>Widest</i>	<b>Width</b> <i>@ Base</i>	<b>Height</b> <i>Outside</i>	<b>Height</b> <i>Inside</i>
A	24 in	27 in	23 in	34 in	31 in
B	17 in	20 in	17 in	24 in	23 in

	<b>Weight</b>	<b>Volume</b>	<b>% set</b>	<b>Suggested Retail</b>
A	311 lbs	13 ft <sup>3</sup>	81%	\$ 765.00
B	113 lbs	3.1 ft <sup>3</sup>	19%	\$ 293.00

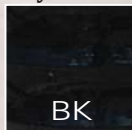
**Comments:** Boldstone planter, two sizes (not a set), frost-proof, drain hole, imported from China

**Item Shown:** DG 1125 CP A

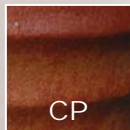
## Other Commonly Stocked Colors...



BB



BK



CP





# DG 1149

	Width	Width	Width	Height	Height
Size	<i>Opening</i>	<i>Widest</i>	<i>@ Base</i>	<i>Outside</i>	<i>Inside</i>
A	- in	21 in	10 in	26 in	- in

---

	Weight	Volume	% set	Suggested Retail
A	64 lbs	3.16 ft <sup>3</sup>	-	\$ 174.00

**Comments:** Boldstone "bubbler" fountain, single piece, frost-proof, drain hole, tubing & brass grommet included, imported from China

**Item Shown:** DG 1149 BW A

**Other Commonly Stocked Colors...**



# DG 1151

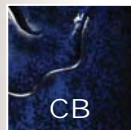
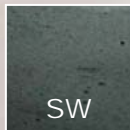
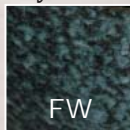
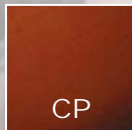
Sizes	Width Opening	Width Widest	Width @ Base	Height Outside	Height Inside
A	-	18 in	12 in	24 in	-
B	-	15 in	8 in	18 in	-

	Weight	Volume	% set	Suggested Retail
A	78 lbs	4.5 ft <sup>3</sup>	-	\$ 280.00
B	42 lbs	2.3 ft <sup>3</sup>	-	\$ 145.00

**Comments:** Boldstone, self-contained fountain, two sizes, frost-proof, includes pump, tubing and brass grommet, imported from China

**Item Shown:** DG 1150 BT B

## Other Commonly Stocked Colors...





# DG 1187

<b>Sizes</b>	<b>Width Opening</b>	<b>Width Widest</b>	<b>Width @ Base</b>	<b>Height Outside</b>	<b>Height Inside</b>
A	6 in	26 in	13 in	26 in	24 in
B	4 in	15 in	8 in	19 in	18 in

	<b>Weight</b>	<b>Volume</b>	<b>% set</b>	<b>Suggested Retail</b>
A	72 lbs	7.8 ft <sup>3</sup>	-	\$ 149.00
B	lbs	2.5 ft <sup>3</sup>	-	\$ 119.00

**Comments:** Boldstone double glazed wine jar, two sizes (not a set), frost-proof, imported from China

**Item Shown:** DG 1187 WN B

**Other Commonly Stocked Colors...**





# DG 1188

Size	Width Opening	Width Widest	Width @ Base	Height Outside	Height Inside
A	15 in	37 in	23 in	45 in	43 in

	Weight	Volume	% set	Suggested Retail
A	347 lbs	36.8 ft <sup>3</sup>	-	\$ 1,463.00

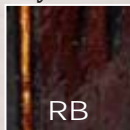
**Comments:** Boldstone double glazed wine jar, single piece, frost-proof, NO drain hole, imported from China

**Item Shown:** DG 1187 MS A

**Other Commonly Stocked Colors...**



LG



RB





# DG 1570

	Width	Width	Width	Height	Height
Sizes	<i>Opening</i>	<i>Widest</i>	<i>@ Base</i>	<i>Outside</i>	<i>Inside</i>
A	14 in	16 in	10 in	16 in	15 in
B	11 in	12 in	7 in	12 in	11.5 in
C	6.5 in	7.5 in	5 in	7.5 in	7 in

---

	Weight	Volume	% set	Suggested Retail
A	27 lbs	2.2 ft <sup>3</sup>	61 %	\$ 101.00
B	12 lbs	1.0 ft <sup>3</sup>	27 %	\$ 45.00
C	5 lbs	0.4 ft <sup>3</sup>	12 %	\$ 19.00

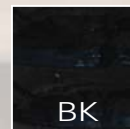
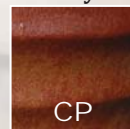
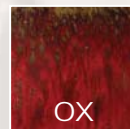
**Set of 3**

**\$ 165.00**

**Comments:** Boldstone planter, frost-proof, drain hole, imported from China

**Item Shown:** DG 1570 CP A

**Other Commonly Stocked Colors...**



# DG 1581

<b>Size</b>	<b>Width Opening</b>	<b>Width Widest</b>	<b>Width @ Base</b>	<b>Height Outside</b>	<b>Height Inside</b>
A	47 in	59 in	38 in	30 in	27 in

	<b>Weight</b>	<b>Volume</b>	<b>% set</b>	<b>Suggested Retail</b>
A	600 lbs	52.5 ft <sup>3</sup>	- %	\$ 4,999.00

**Comments:** Boldstone garden pool, single piece, double glazed, frost-proof, NO drain hole, imported from China

**Item Shown:** DG 1581 RB A

**Other Commonly Stocked Colors...**





# DG 1587

	Width	Width	Width	Height	Height
Sizes	Opening	Widest	@ Base	Outside	Inside
A	26 in	31 in	19 in	25 in	24 in
B	15 in	19 in	12 in	17 in	16 in

	Weight	Volume	% set	Suggested Retail
A	143 lbs	12.5 ft <sup>3</sup>	78 %	\$ 446.00
B	47 lbs	3.6 ft <sup>3</sup>	22 %	\$ 127.00

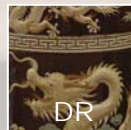
**Set of 2**

**\$ 573.00**

**Comments:** Boldstone planter, double glazed, two sizes (not a set), frost-proof, imported from China

**Item Shown:** DG 1587 DR B

**Other Commonly Stocked Colors...**





# DG 1594

<b>Sizes</b>	<b>Width Opening</b>	<b>Width Widest</b>	<b>Width @ Base</b>	<b>Height Outside</b>	<b>Height Inside</b>
X	42 in	49 in	28 in	30.5 in	28 in
A	26.5 in	32 in	18 in	21 in	19 in
B	20 in	24 in	13.5 in	16 in	15 in
C	15 in	18 in	10 in	13 in	12 in

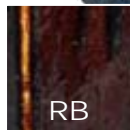
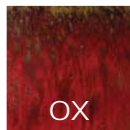
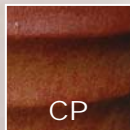
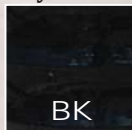
	<b>Weight</b>	<b>Volume</b>	<b>% set</b>	<b>Suggested Retail</b>
X	420 lbs	24.2 ft <sup>3</sup>	- %	\$ 1,461.00
A	139 lbs	7.0 ft <sup>3</sup>	61 %	\$ 591.00
B	60 lbs	3.0 ft <sup>3</sup>	26 %	\$ 254.00
C	28 lbs	1.4 ft <sup>3</sup>	13 %	\$ 117.00

**Set of 3** (not including X size) **\$ 962.00**

**Comments:** Boldstone planter, super size and set of three, frost-proof, drain hole, imported from China

**Item Shown:** DG 1594 NB X

**Other Commonly Stocked Colors...**





# DG 1604

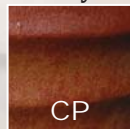
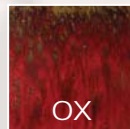
	Width	Width	Width	Height	Height
Size	<i>Opening</i>	<i>Widest</i>	<i>@ Base</i>	<i>Outside</i>	<i>Inside</i>
A	16 in	30 in	18 in	33.5 in	32 in

	Weight	Volume	% set	Suggested Retail
A	174 lbs	10.5 ft <sup>3</sup>	- %	\$ 561.00

**Comments:** Boldstone planter, single piece, frost-proof, NO drain hole, imported from China

**Item Shown:** DG 1604 LB A

**Other Commonly Stocked Colors...**



# DG 1609

Size	Width	Width	Width	Height	Height
	Opening	Widest	@ Base	Outside	Inside
A	19.5 in	31 in	15 in	32.5 in	32 in

	Weight	Volume	% set	Suggested Retail
A	172 lbs	8.7 ft <sup>3</sup>	- %	\$ 674.00

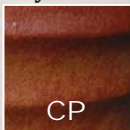
**Comments:** Boldstone planter, single piece, frost-proof, NO drain hole, imported from China

**Item Shown:** DG 1609 OX A

## Other Commonly Stocked Colors...



BB



CP



OX



LG





# DG 1610

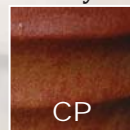
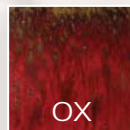
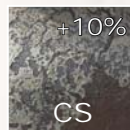
	Width	Width	Width	Height	Height
Size	<i>Opening</i>	<i>Widest</i>	<i>@ Base</i>	<i>Outside</i>	<i>Inside</i>
A	17 in	30 in	15.5 in	40 in	38 in

	Weight	Volume	% set	Suggested Retail
A	174 lbs	10.8 ft <sup>3</sup>	- %	\$ 843.00

**Comments:** Boldstone planter, single piece, frost-proof, drain hole, iron rings optional, imported from China

**Item Shown:** DG 1610 CP A

**Other Commonly Stocked Colors...**





# DG 1611

<b>Sizes</b>	<b>Width Opening</b>	<b>Width Widest</b>	<b>Width @ Base</b>	<b>Height Outside</b>	<b>Height Inside</b>
A	20 in	24 in	15 in	22 in	20 in
B	17 in	22 in	14 in	19 in	18 in
C	16 in	20 in	13 in	16 in	15 in

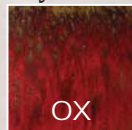
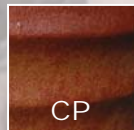
	<b>Weight</b>	<b>Volume</b>	<b>% set</b>	<b>Suggested Retail</b>
A	85 lbs	7.3 ft <sup>3</sup>	45 %	\$ 171.00
B	64 lbs	5.3 ft <sup>3</sup>	33 %	\$ 126.00
C	52 lbs	3.7 ft <sup>3</sup>	23 %	\$ 88.00

**Set of 3** **\$ 385.00**

**Comments:** Boldstone planter, frost-proof, drain hole, imported from China

**Item Shown:** DG 1611 NB A

**Other Commonly Stocked Colors...**





# DG 1612s

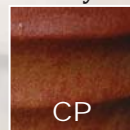
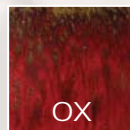
	Width	Width	Width	Height	Height
Sizes	<i>Opening</i>	<i>Widest</i>	<i>@ Base</i>	<i>Outside</i>	<i>Inside</i>
A	18 in	28 in	15 in	62 in	60.5 in
B	13.5 in	26 in	14 in	53 in	51.5 in
C	14 in	27 in	14 in	42.5 in	40.5 in
D	10.5 in	21 in	11.5 in	31 in	30 in

	Weight	Volume	% set	Suggested Retail
A	252 lbs	15.1 ft <sup>3</sup>	- %	\$ 1,170.00
B	204 lbs	11.2 ft <sup>3</sup>	- %	\$ 882.00
C	193 lbs	9.3 ft <sup>3</sup>	- %	\$ 664.00
D	98 lbs	4.3 ft <sup>3</sup>	- %	\$ 299.00

**Comments:** Boldstone urn, scratched finish, four sizes, frost-proof, drain hole, imported from China

**Item Shown:** DG 1612s AM D

**Other Commonly Stocked Colors...**



# DG 1612

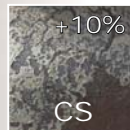
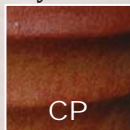
Sizes	Width <i>Opening</i>	Width <i>Widest</i>	Width <i>@ Base</i>	Height <i>Outside</i>	Height <i>Inside</i>
A	18 in	28 in	15 in	62 in	60.5 in
B	13.5 in	26 in	14 in	53 in	51.5 in
C	14 in	27 in	14 in	42.5 in	40.5 in
D	10.5 in	21 in	11.5 in	31 in	30 in

	Weight	Volume	% set	Suggested Retail
A	252 lbs	15.1 ft <sup>3</sup>	- %	\$ 1,170.00
B	204 lbs	11.2 ft <sup>3</sup>	- %	\$ 882.00
C	193 lbs	9.3 ft <sup>3</sup>	- %	\$ 664.00
D	98 lbs	4.3 ft <sup>3</sup>	- %	\$ 299.00

**Comments:** Boldstone urn, smooth finish, four sizes, frost-proof, drain hole, imported from China

**Item Shown:** DG 1612 DB D

## Other Commonly Stocked Colors...





# DG 1613

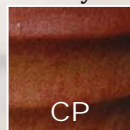
Sizes	Width	Width	Width	Height	Height
	<i>Opening</i>	<i>Widest</i>	<i>@ Base</i>	<i>Outside</i>	<i>Inside</i>
A	18 in	28 in	15 in	62 in	60.5 in
B	13.5 in	26 in	14 in	53 in	51.5 in
C	14 in	27 in	14 in	42.5 in	40.5 in
D	10.5 in	21 in	11.5 in	31 in	30 in

	Weight	Volume	% set	Suggested Retail
A	252 lbs	15.1 ft <sup>3</sup>	- %	\$ 1,170.00
B	204 lbs	11.2 ft <sup>3</sup>	- %	\$ 882.00
C	193 lbs	9.3 ft <sup>3</sup>	- %	\$ 664.00
D	98 lbs	4.3 ft <sup>3</sup>	- %	\$ 299.00

**Comments:** Boldstone urn, four sizes, frost-proof, drain hole, imported from China

**Item Shown:** DG 1613 CP B

**Other Commonly Stocked Colors...**





# DG 1613F

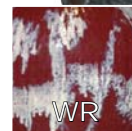
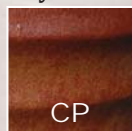
Sizes	Width Opening	Width Widest	Width @ Base	Height Outside	Height Inside
A	18 in	28 in	15 in	62 in	60.5 in
B	13.5 in	26 in	14 in	53 in	51.5 in
C	14 in	27 in	14 in	42.5 in	40.5 in
D	10.5 in	21 in	11.5 in	31 in	30 in

	Weight	Volume	% set	Suggested Retail
A	252 lbs	15.1 ft <sup>3</sup>	- %	\$ 1,170.00
B	204 lbs	11.2 ft <sup>3</sup>	- %	\$ 882.00
C	193 lbs	9.3 ft <sup>3</sup>	- %	\$ 664.00
D	98 lbs	4.3 ft <sup>3</sup>	- %	\$ 299.00

**Comments:** Boldstone fountain, four sizes, frost-proof, drain hole, imported from China

**Item Shown:** DG 1613f CS C

**Other Commonly Stocked Colors...**





# DG 1631

Sizes	Width <i>Opening</i>	Width <i>Widest</i>	Width <i>@ Base</i>	Height <i>Outside</i>	Height <i>Inside</i>
A	17 in	20 in	14 in	9.5 in	8.5 in
B	14 in	16 in	12 in	8 in	7 in
C	10 in	12 in	8.5 in	6.5 in	5.5 in
D	6.5 in	7.5 in	5.5 in	4.5 in	3.5 in

	Weight	Volume	% set	Suggested Retail
A	29 lbs	2.1 ft <sup>3</sup>	53%	\$ 210.00
B	19 lbs	1.2 ft <sup>3</sup>	30 %	\$ 122.00
C	11 lbs	0.5 ft <sup>3</sup>	13 %	\$ 71.00
D	4 lbs	0.2 ft <sup>3</sup>	4 %	\$ 59.00

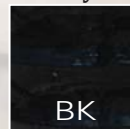
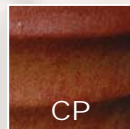
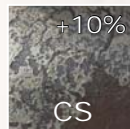
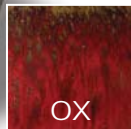
**Set of 4**

**\$ 462.00**

**Comments:** Boldstone planter, frost-proof, drain hole, imported from China

**Item Shown:** DG 1631 BK A

**Other Commonly Stocked Colors...**



# DG 1903

<b>Sizes</b>	<b>Width Opening</b>	<b>Width Widest</b>	<b>Width @ Base</b>	<b>Height Outside</b>	<b>Height Inside</b>
A	17 in	21 in	12 in	21 in	20 in
B	12 in	15 in	9.5 in	17 in	16 in
C	8 in	10 in	6 in	11 in	10 in

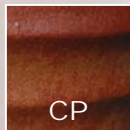
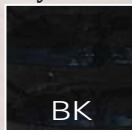
	<b>Weight</b>	<b>Volume</b>	<b>% set</b>	<b>Suggested Retail</b>
A	109 lbs	5.4 ft <sup>3</sup>	66 %	\$ 260.00
B	55 lbs	2.2 ft <sup>3</sup>	27 %	\$ 107.00
C	18 lbs	0.6 ft <sup>3</sup>	7 %	\$ 28.00

**Set of 3** **\$ 395.00**

**Comments:** Boldstone planter, frost-proof, drain hole, imported from China

**Item Shown:** DG 1903 SG B

**Other Commonly Stocked Colors...**





# DG 3001

	Width	Width	Width	Height	Height
Sizes	<i>Opening</i>	<i>Widest</i>	<i>@ Base</i>	<i>Outside</i>	<i>Inside</i>
A	18 in	25 in	12 in	24 in	22 in
B	12 in	17 in	9 in	17 in	15 in

	Weight	Volume	% set	Suggested Retail
A	114 lbs	9.0 ft <sup>3</sup>	69%	\$ 354.00
B	47 lbs	4.0 ft <sup>3</sup>	31%	\$ 132.00

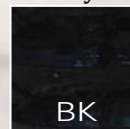
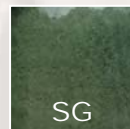
**Set of 2**

**\$ 486.00**

**Comments:** Boldstone planter, frost-proof, drain hole, imported from China

**Item Shown:** DG 3001 OX B

**Other Commonly Stocked Colors...**





# DG 3201

Sizes	Width <i>Opening</i>	Width <i>Widest</i>	Width <i>@ Base</i>	Height <i>Outside</i>	Height <i>Inside</i>
A	17 in	20 in	13.5 in	17.5 in	17 in
B	13 in	15 in	10 in	13.5 in	13 in
C	9.5 in	11.5 in	7.5 in	11 in	10.5 in

	Weight	Volume	% set	Suggested Retail
A	56 lbs	4.2 ft <sup>3</sup>	58 %	\$ 156.00
B	31 lbs	2.1 ft <sup>3</sup>	29 %	\$ 78.00
C	16 lbs	0.9 ft <sup>3</sup>	13 %	\$ 34.00

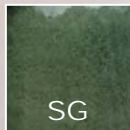
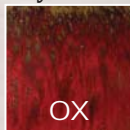
Set of 3

\$ 268.00

**Comments:** Boldstone planter, frost-proof, drain hole, imported from China

**Item Shown:** DG 3201 BB A

**Other Commonly Stocked Colors...**





# DG 3366

	Width	Width	Width	Height	Height
Sizes	<i>Opening</i>	<i>Widest</i>	<i>@ Base</i>	<i>Outside</i>	<i>Inside</i>
A	17.5 x 9.5in	20x12.5in	11x7in	21.5 in	21 in
B	12.5x6.5in	15x9in	8x5in	14.5 in	13.5 in

	Weight	Volume	% set	Suggested Retail
A	83 lbs	3.2 ft <sup>3</sup>	70%	\$ 150.00
B	33 lbs	1.3 ft <sup>3</sup>	30%	\$ 64.00

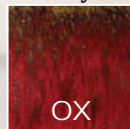
**Set of 2**

**\$ 214.00**

**Comments:** Boldstone planter, frost-proof, drain hole, imported from China

**Item Shown:** DG 3366 SG A

**Other Commonly Stocked Colors...**



OX



BB

# Marblestone Collection

The Marblestone line is hand-built rustic stoneware that are unique both in shape and color. The production process (use of traditional wood fired dragon kiln) is subject to the throws of nature, creating an amazing richness in the range of colors and finishes.

The majority of our Marblestone is glazed inside adding to its high environmental resilience due to the high sintering temperatures. Some of the characteristics that this production method creates are;

## **FROST-PROOF**

*Is considered high-fired stoneware, vitrified*

## **ORGANIC EARTHEN COLORS**

*Many different color shades on the same pot*

## **HOME & GARDEN FOCAL POINTS**

*Shapes & styles range from 6 to 60 inches*

Rarely will two rustic vessels be a perfect match. That is the primary aesthetic appeal of this line; each piece is special and one of a kind. Irregular finishes, drips (kiln sweat) and runs of glaze are not considered blemishes, but rather, beauty marks, lending an organic energy to a lifeless object.

Embrace the perfection of the imperfections...





# DG 4002

	Width	Width	Width	Height	Height
Size	Opening	Widest	@ Base	Outside	Inside
A	- in	16.5 in	15.5 in	21.5 in	- in

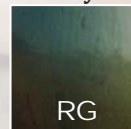
---

	Weight	Volume	% set	Suggested Retail
A	79 lbs	3.2 ft <sup>3</sup>	-	\$ 212.00

**Comments:** Marblestone self-contained fountain, single size, frost-proof, pump/tubing & brass grommet included, imported from China

**Item Shown:** DG 4002 RR A

**Other Commonly Stocked Colors...**





# DG 4003

<b>Sizes</b>	<b>Width Opening</b>	<b>Width Widest</b>	<b>Width @ Base</b>	<b>Height Outside</b>	<b>Height Inside</b>
A	26 in	30.5 in	17.5 in	34 in	32.5 in
B	12 in	15 in	10 in	24.5 in	23 in

	<b>Weight</b>	<b>Volume</b>	<b>% set</b>	<b>Suggested Retail</b>
A	196 lbs	19.4 ft <sup>3</sup>	90%	\$ 449.00
B	39 lbs	2.1 ft <sup>3</sup>	10%	\$ 84.00

**Set of 2** **\$ 533.00**

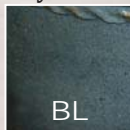
**Comments:** Marblestone planter, frost-proof, drain hole, imported from China

**Item Shown:** DG 4003 YB A

## Other Commonly Stocked Colors...



BG



BL



FP



GY



RR





# DG 4006

	Width	Width	Width	Height	Height
Sizes	<i>Opening</i>	<i>Widest</i>	<i>@ Base</i>	<i>Outside</i>	<i>Inside</i>
A	29.5 in	34 in	16 in	33.5 in	32.5 in
B	21.5 in	25.5 in	12.5 in	26 in	25 in
C	15 in	18 in	10.5 in	16.5 in	15.5 in

	Weight	Volume	% set	Suggested Retail
A	189 lbs	19.0 ft <sup>3</sup>	61 %	\$ 449.00
B	87 lbs	8.7 ft <sup>3</sup>	28 %	\$ 201.00
C	32 lbs	3.6 ft <sup>3</sup>	11 %	\$ 89.00

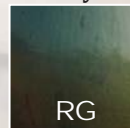
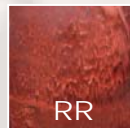
**Set of 3**

**\$ 739.00**

**Comments:** Marblestone planter, set of three, frost-proof, drain hole, imported from China

**Item Shown:** DG 4006 YB B

**Other Commonly Stocked Colors...**



# DG 4008

<b>Sizes</b>	<b>Width Opening</b>	<b>Width Widest</b>	<b>Width @ Base</b>	<b>Height Outside</b>	<b>Height Inside</b>
A	25 in	29 in	16 in	26 in	25 in
B	16 in	19.5 in	12 in	18.5 in	17.5 in
C	12 in	15 in	9 in	14.5 in	13.5 in

	<b>Weight</b>	<b>Volume</b>	<b>% set</b>	<b>Suggested Retail</b>
A	127 lbs	10.9 ft <sup>3</sup>	57 %	\$ 357.00
B	52 lbs	5.6 ft <sup>3</sup>	29 %	\$ 183.00
C	22 lbs	2.7 ft <sup>3</sup>	14 %	\$ 88.00

**Set of 3**

**\$ 628.00**

**Comments:** Marblestone planter, set of three, frost-proof, drain hole, imported from China

**Item Shown:** DG 4008 BL A

## Other Commonly Stocked Colors...



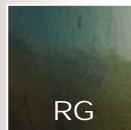
FP



GY



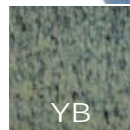
NT



RG



RR



YB







# DG 4009

Sizes	Width <i>Opening</i>	Width <i>Widest</i>	Width <i>@ Base</i>	Height <i>Outside</i>	Height <i>Inside</i>
A	28.5 in	34 in	18 in	24 in	23 in
B	21 in	25.5 in	16 in	20.5 in	19.5 in
C	15 in	19 in	13 in	16 in	15 in

	Weight	Volume	% set	Suggested Retail
A	153 lbs	13.4 ft <sup>3</sup>	58 %	\$ 336.00
B	95 lbs	6.7 ft <sup>3</sup>	29 %	\$ 168.00
C	51 lbs	2.8 ft <sup>3</sup>	12 %	\$ 78.00

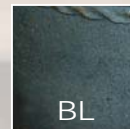
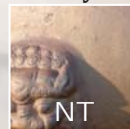
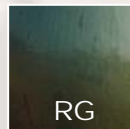
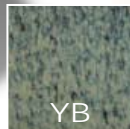
**Set of 3**

**\$ 582.00**

**Comments:** Marblestone planter, frost-proof, drain hole, imported from China

**Item Shown:** DG 4009 YB B

**Other Commonly Stocked Colors...**





# DG 4042

Sizes	Width <i>Opening</i>	Width <i>Widest</i>	Width <i>@ Base</i>	Height <i>Outside</i>	Height <i>Inside</i>
A	22 in	28 in	16 in	41 in	40 in
B	14.5 in	19.5 in	11.5 in	30.5 in	29 in

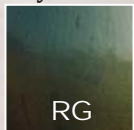
	Weight	Volume	% set	Suggested Retail
A	185 lbs	10.6 ft <sup>3</sup>	69%	\$ 496.00
B	67 lbs	4.0 ft <sup>3</sup>	31%	\$ 205.00

Set of 2 \$ 701.00

**Comments:** Marblestone planter, frost-proof, drain hole, imported from China

**Item Shown:** DG 4042 BG A

## Other Commonly Stocked Colors...





# DG 4049

Sizes	Width <i>Opening</i>	Width <i>Widest</i>	Width <i>@ Base</i>	Height <i>Outside</i>	Height <i>Inside</i>
A	14 in	16 in	10 in	15.5 in	15 in
B	11 in	13 in	8.5 in	13 in	12 in
C	8.5 in	10 in	6.5 in	10 in	9 in
D	6.5 in	8 in	5 in	8 in	7 in

	Weight	Volume	% set	Suggested Retail
A	29 lbs	ft <sup>3</sup>	53%	\$ 55.00
B	19 lbs	ft <sup>3</sup>	30 %	\$ 24.00
C	10 lbs	ft <sup>3</sup>	13 %	\$ 14.00
D	6 lbs	ft <sup>3</sup>	4 %	\$ 7.00

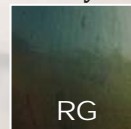
**Set of 3**

**\$ 100.00**

**Comments:** Marblestone planter, frost-proof, drain hole, imported from China

**Item Shown:** DG 4049 RR A

**Other Commonly Stocked Colors...**



# DG 4050

Sizes	Width <i>Opening</i>	Width <i>Widest</i>	Width <i>@ Base</i>	Height <i>Outside</i>	Height <i>Inside</i>
A	20 in	26 in	12 in	25 in	24 in
B	13.5 in	18 in	9 in	20 in	19 in
C	8 in	10 in	7 in	16 in	15 in

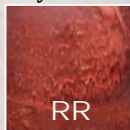
	Weight	Volume	% set	Suggested Retail
A	73 lbs	7.0 ft <sup>3</sup>	59 %	\$ 224.00
B	41 lbs	3.0 ft <sup>3</sup>	26 %	\$ 96.00
C	21 lbs	1.8 ft <sup>3</sup>	15 %	\$ 57.00

Set of 3 **\$ 377.00**

**Comments:** Marblestone planter, frost-proof, drain hole, imported from China

**Item Shown:** DG 4050 RG A

**Other Commonly Stocked Colors...**





# DG 4056F

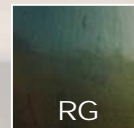
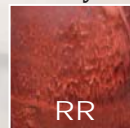
Sizes	Width <i>Opening</i>	Width <i>Widest</i>	Width <i>@ Base</i>	Height <i>Outside</i>	Height <i>Inside</i>
A	18 in	28 in	15 in	66 in	65 in
B	18 in	28 in	14 in	42 in	40 in
C	15 in	24 in	13 in	40 in	38 in

	Weight	Volume	% set	Suggested Retail
A	260 lbs	16.0 ft <sup>3</sup>	- %	\$ 1,124.00
B	203 lbs	9.5 ft <sup>3</sup>	- %	\$ 669.00
C	133 lbs	7.2 ft <sup>3</sup>	- %	\$ 506.00

**Comments:** Marblestone fountain, three sizes, frost-proof, imported from China

**Item Shown:** DG 4056f BH A

**Other Commonly Stocked Colors...**





# DG 4056

Sizes	Width <i>Opening</i>	Width <i>Widest</i>	Width <i>@ Base</i>	Height <i>Outside</i>	Height <i>Inside</i>
A	18 in	28 in	15 in	66 in	65 in
B	18 in	28 in	14 in	42 in	40 in
C	15 in	24 in	13 in	40 in	38 in

	Weight	Volume	% set	Suggested Retail
A	260 lbs	16.0 ft <sup>3</sup>	- %	\$ 1,124.00
B	203 lbs	9.5 ft <sup>3</sup>	- %	\$ 669.00
C	133 lbs	7.2 ft <sup>3</sup>	- %	\$ 506.00

**Comments:** Marblestone urns, three sizes, frost-proof, imported from China

**Item Shown:** DG 4056 RR A

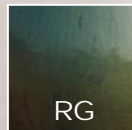
## Other Commonly Stocked Colors...



BL



FP



RG



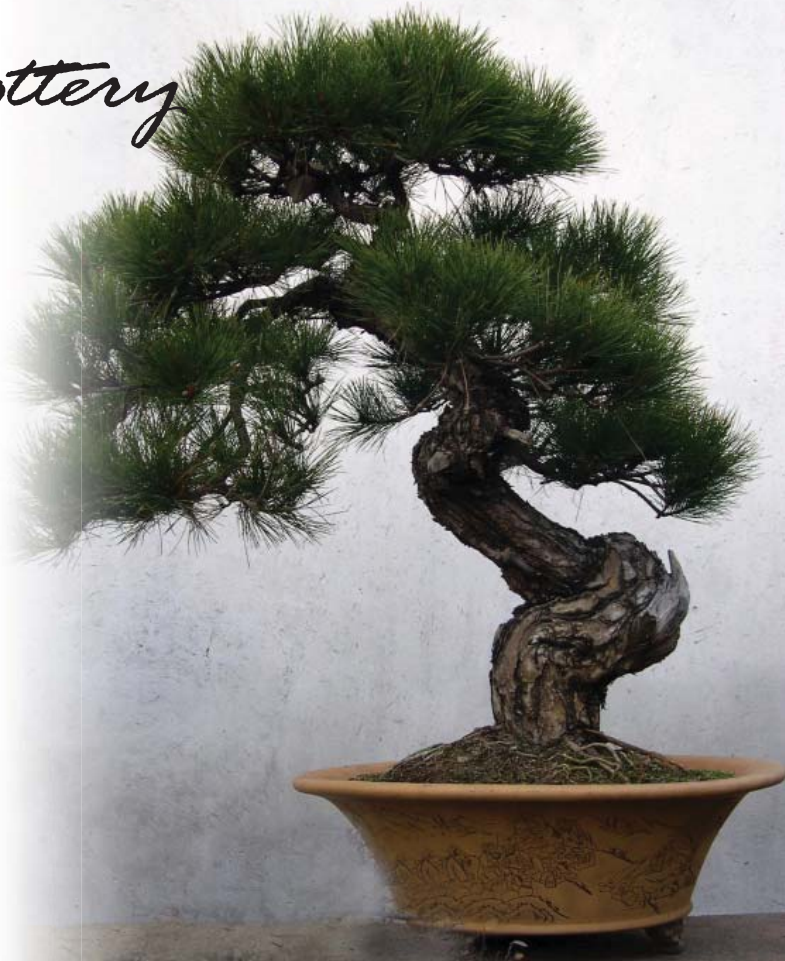
# Heirloom Bonsai Pottery

We consider our bonsai pots heirloom quality. The Japanese term for high quality bonsai pots is Tokoname (after a city located in Aichi, Japan, famous for its high quality ceramics.) Since most of this factories clients are Japanese importers and nurserymen, our pots have been made to exacting demands. This factory is relatively small, more like a workshop, with limited production capabilities, but the quality is fantastic.

Most of the molds in this factory were cast from ancient and traditional Japanese bonsai pots brought to the factory by their Japanese customers. All the vessels are hand built and gas-fired to cone 7-8, making them high-fired stoneware, as durable and functional as garden pottery can be.

There are a few glaze colors offered but most are left unglazed to show the quality craftsmanship that a glaze can hide. The factory is able to provide antique finishes, by hand burnishing and tooling the pots prior to firing.

Our bonsai pots will last and last, and only look better and better as they age with the tree. Moss and lichens will grow on the pot and soon the tree and pot will become one. These pots are a luxury home for the most prized bonsai in your customers collection.





**DG 9010 DC - SET OF THREE**

A: 20x15x4.7 in - \$ 116.00 MSRP

B: 16x12x4 in - \$ 64.00 MSRP

C: 12x9x2.5 in - \$ 21.00 MSRP

**SET: \$ 201.00 MSRP**



**DG 9012 MC - SET OF THREE**

A: 20x15x4.7 in - \$ 116.00 MSRP

B: 16x12x4 in - \$ 64.00 MSRP

C: 12x9x2.5 in - \$ 21.00 MSRP

**SET: \$ 201.00 MSRP**



**DG 9014 MC - SET OF THREE**

A: 13x13x4 in - \$ 83.00 MSRP

B: 10x10x3 in - \$ 40.00 MSRP

C: 8x8x3 in - \$ 23.00 MSRP

**SET: \$ 146.00 MSRP**



*Tokoname style Birdhouse - DG 9090 MC A - 5x5x11 in - \$ 45 MSRP*



**DG 9016 DC - SET OF THREE**

A; 20x17x5.5 - \$ 112.00 MSRP

B: 17x14x4.7 - \$ 63.00 MSRP

C: 13x11x4.3 - \$ 36.00 MSRP

**SET: \$ 211.00 MSRP**



**DG 9018 MC - SET OF THREE**

A: 20x15x4.3 in - \$ 117.00 MSRP

B: 16x13x3.5 in - \$ 62.00 MSRP

C: 12x8x2.4 in - \$ 20.00 MSRP

**SET: \$ 199.00 MSRP**



**DG 9020 DC - SET OF THREE**

A: 17x14x4 in - \$ 86.00 MSRP

B: 14x11x3 in - \$ 42.00 MSRP

C: 10x7x2.5 in - \$16.00 MSRP

**SET: \$ 144.00 MSRP**

# Floralware Indoor Pottery

Floralware products are made from a slip cast procedure using liquid clay and plaster molds. Over a matter of minutes, the plaster mold absorbs the water from the clay, resulting in a "skin" of clay once the contents of the mold is poured out. This skin creates the pot, which is hand finished and glazed.

Due to the small clay particle size, these pots are NOT able to handle the expansion and contraction of a frost. We offer these as indoor pots in colder climates but can be used outdoors in temperate climates. Some of the characteristics that this production method creates are;

## **SMOOTH, FLAWLESS FINISH**

*Fine clay particles create a smooth surface*

## **WIDE COLOR CHOICE**

*With the low firing temperatures, a greater degree of color can be created*

## **KEEP SURFACES DRY**

*All pots come with a matching double glazed saucer*

## **NO SCRATCHING SURFACES**

*Small felt pads are set on the underside of each saucer*







**DG 8301 BK - SET OF 3**

A: 10x5 - \$ 19.00 MSRP

B: 9x4 - \$ 12.00 MSRP

C: 7x3 - \$ 5.00 MSRP

**SET: \$ 36.00 MSRP**



**DG 8302 CM - SET OF 3**

A: 10x9 - \$ 27.00 MSRP

B: 8x7 - \$ 13.00 MSRP

C: 6x5 - \$ 5.00 MSRP

**SET: \$ 45.00 MSRP**



**DG 8304 DB - SINGLE**

A: 5.5x4 - \$ 7.00 MSRP

CASE OF 16

**CASE: \$ 112.00 MSRP**



**DG 8306 LR - SET OF 4**

A: 10x10 - \$ 27.00 MSRP

B: 8x8 - \$ 14.00 MSRP

C: 6x6 - \$ 6.00 MSRP

D: 5x5 - \$ 4.00 MSRP

**SET: \$ 51.00 MSRP**



**DG 8305 DB - SET OF 3**

A: 16x7x4 - \$ 27.00 MSRP

B: 12x5x3 - \$ 11.00 MSRP

C: 8x4x2 - \$ 4.00 MSRP

**SET: \$ 42.00 MSRP**



**DG 8308 WH - SET OF 4**

A: 9x9 - \$ 23.00 MSRP

B: 7x7 - \$ 11.00 MSRP

C: 6x6 - \$ 7.00 MSRP

D: 4x4 - \$ 2.00 MSRP

**SET: \$ 43.00 MSRP**



**DG 8309 OX - SET OF 4**

A: 11x11 - \$ 38.00 MSRP

B: 8x8 - \$ 15.00 MSRP

C: 6x6 - \$ 6.00 MSRP

D: 5x5 - \$ 4.00 MSRP

**SET: \$ 63.00 MSRP**



**DG 8313 BK - SET OF 3**

A: 11x7 - \$ 24.00 MSRP

B: 9x5 - \$ 12.00 MSRP

C: 6x4 - \$ 4.00 MSRP

**SET: \$ 40.00 MSRP**



**DG 8315 MR - SET OF 2**

A: 11x7 - \$ 26.00 MSRP

B: 8x5 - \$ 10.00 MSRP

**SET: \$ 36.00 MSRP**



**DG 8399 MX - SINGLE**

2 lb. bag - \$ 2.00 MSRP

3-5 cm rocks

Case of 10 bags

**CASE: \$ 15.00 MSRP**

# Environmental Impact and

We care about our customers, craftsmen and climate...Dragon Gardens Northwest considers itself an environmentally and morally conscious, American company. Ceramics are produced by the harvest of raw natural materials, heavy labor, skilled craftsmanship and combustion. The word “ceramics” is derived from the Greek word “keramos” practically translated as “burnt earth.” This being said, we still do our best to persuade and direct the factories to follow humane and environmentally conscious production methods if they are not already doing so. Below you will find some of the challenges we face and some of the solutions we have found work in China and Vietnam.

**Working Conditions & Human Rights Overseas:** The unskilled nature of harvesting of raw, naturally occurring materials and the physical labor involved in production, create an opportunity for factory owners to exploit their virtually inexhaustible supply of migrant workers, most of who are ignorant of their rights under Chinese law and are willing to work under any conditions without protest. There are a number of actions we have taken to avoid investing in factories that exploit their laborers.

The first action we took is direct supervision. I make frequent trips abroad to inspect and observe working conditions at the factories we support. During these trips, I tour the factory with the managers and my assistant, then ask to inspect without supervision in order to converse with the staff without the intimidation of management listening in. We observe their work areas; ask them about work breaks and hours worked per day. The work day generally begins around 7am and concludes at 7pm or dark in the shorter days of winter.

The majority of our factories pay their production personnel by the piece. They are allowed to set their own pace and are paid based on the quantity of products that meet quality standards. Most production staff are groups of husband and wife teams working together. The larger factories provide a breakfast and lunch and a mid afternoon rest-time (generally 12-2pm) Workers are guaranteed at least one day off every week, but we have observed that in the “piece-work” factories the workers choose to work nearly 7 days a week, The working conditions are required to be safe and sanitary.

In addition to our personal supervision, we maintain a full-time independent representative, living in China. This individual is valuable for a number of reasons, including quality control and inspection, as well as new source inspections. Since she works for us and not the factory we are able to receive an unbiased evaluation of working conditions at each new factory. She is instructed to look for infrastructure that is hard to fake, like the presence protective equipment (gloves, face shields, fans, etc) clean and uncluttered work spaces and the presence of hydration facilities and first aid supplies. The ceramics trade does not exploit the use of children in their labor force, due to the physical strength required. The apparel and rug trades are notorious for their use of children.

Another action we have taken was to form a purchasing group with a company similar to ours based in Australia. Between our two companies we are able to present ourselves to the factories as a single entity with significant buying power. In addition to the buying power we also present ourselves as a efficient client since we have opposite “busy seasons, being in opposite hemispheres. The factory is guaranteed year round orders allowing their factories to be more efficient. But as the saying goes, “money talks” and in China this is the bottom line. By sending our rep to the factory with the buying power of two companies that purchase nearly one hundred 40’ containers of pottery a year, we are able to demand conditions meet our standards, in order for them to earn our business.

# Human Rights Statement

Our experience in this business, having a practical working knowledge of how our product is produced, knowing the cost of the raw materials allows us to make informed decisions about who we choose to purchase pottery from. Jon Paulson, my father, recently spent two months at our primary Boldstone factory. He was able to truly witness the work flow of the factory, get to know some of the workers and help streamline material handling and quality issues.

We understand the measures taken by a factory if their prices “look too good to be true.” Our knowledge of the production process enables us to avoid the factories that exploit their workers, or compromise quality with cheap or dangerous materials. Either way we choose not to work with those folks. We feel that the reduction in labor rights violations and the maintenance of better working conditions will strengthen the loyalty of factory workers, resulting in improved production quality and efficiency, creating a higher valued product for the factory, importer, retailer and consumer.

**Environmental Impact Overseas:** In order to discuss our actions to minimize the environmental impact of our products, we first need to review the nature of ceramics. Pottery is typically produced by the application of heat upon processed clays and other natural raw materials to form a rigid product. Ceramic products that use naturally occurring rocks and minerals as a starting material must undergo special processing in order to control purity, particle size, particle size distribution, and heterogeneity. These attributes play a big role in the final properties of the finished ceramic.

The next step is to form the ceramic particles into a desired shape. This is accomplished by the addition of water and/or additives such as binders, followed by a shape forming process. Some of the most common forming methods for our ceramic containers include slip casting, press molds and coiling. Slip casts and press molds are fabricated from plaster. Once the molds begin to show wear, they are recycled into new molds. After the particles are formed, these “green” (meaning un-fired) ceramics undergo a heat-treatment (called firing or sintering) to produce a rigid, finished product. Many of our ceramic products then undergo a glazing process. Some materials used to glaze these containers are Iron, Copper, Cobalt and Magnesium, all of which are made inert, due to the high temperature firing. Any volatile organic or potentially hazardous metallic components are either vaporized during firing or stabilized and made inert during firing.

Our kilns are fired with naturally occurring combustion materials; wood (primarily pine and bamboo) or natural gas. These are the traditional materials used in Asia and the USA for the last 2,000 years. The primary pollutant produced is CO<sub>2</sub>, ash and soot. Ash is cleaned from kilns and amended into soil (most kilns have an adjoining farm.) Our rustic kilns have been producing ceramics in the same valley for the last 800 years.

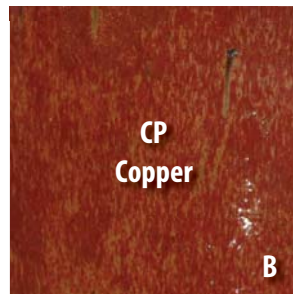
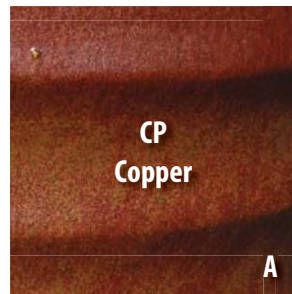
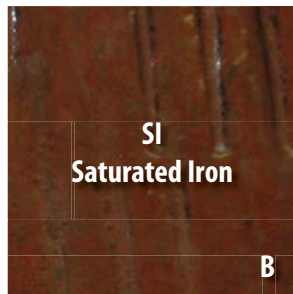
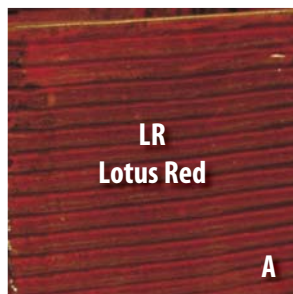
**Domestic Environmental Impact:** Domestically, we do our best to minimize pollution. We run electric lift trucks and utilize ‘vegan’ diesel delivery trucks when available. We recycle approximately ½ to 1½ tons of cardboard per month and heat our warehouse with natural gas. At Dragon Gardens Northwest we take the condition of our environment seriously. As a father of four, I think this Native American proverb says it best...

**“WE DO NOT INHERIT THE EARTH FROM OUR ANCESTORS; WE BORROW IT FROM OUR CHILDREN...”**

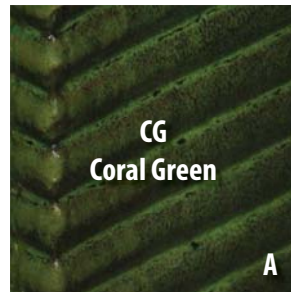
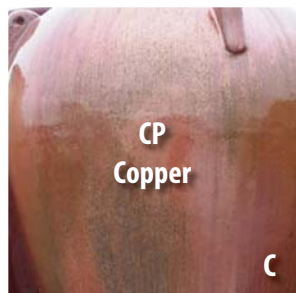
# *Boldstone glaze swatches*

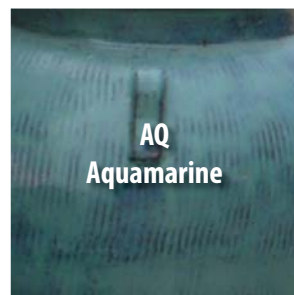
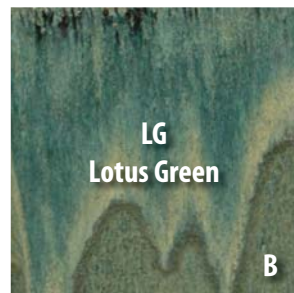
Our Boldstone glazes offer a color range suitable to meet all your customers' needs. Due to the high-fired nature of our ceramics (to create a weather-proof product for colder climates), our glazes evoke rich earthen hues of red, blue, green, yellow, brown, black and white. The finish and textures of our ceramics range from glossy to eggshell, to natural surfaces like coral and flagstone, enhancing the glaze colors with depth and character.

Feedback from our independent gardens center clients and design professionals tell us that our efforts to create unique finishes and fashionable colors helps them to differentiate their brand from their competitors, while maintaining price points to accelerate sales.

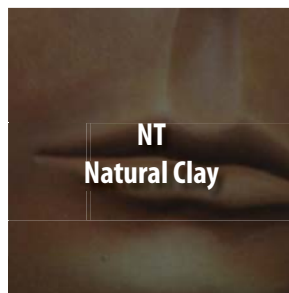
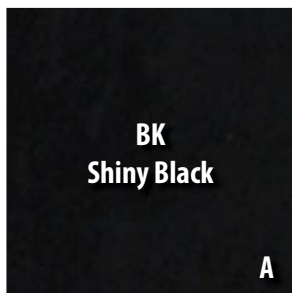












[www.dragongardens.com](http://www.dragongardens.com)

[www.dragongardens.com](http://www.dragongardens.com)

